

CHASE TOWER
333 W. HAMPDEN AVENUE
ENGLEWOOD, CO 80110

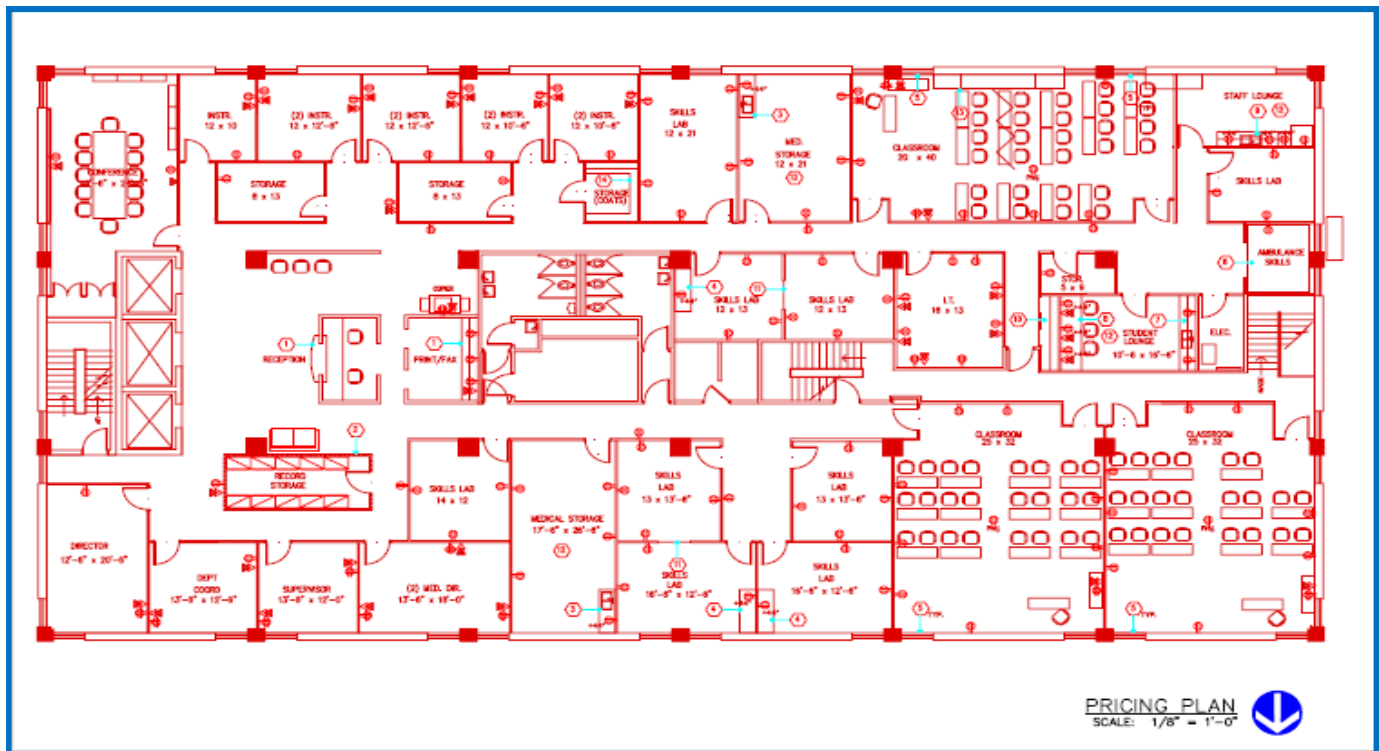


\$19.00—\$21.00 Full Service Rate

Full service lease rate—all expenses included

Suite 200
11,620 SF

Entire Second Floor. Good access from main elevators; access from stairwell. Available third quarter.



No warranty or representation is made as to the accuracy of the foregoing information. Terms of sale or lease and availability are subject to change or withdrawal without notice.

FOR MORE INFORMATION, PLEASE CALL:

John V. Propp, CCIM—303/692-1816
6565 S. Dayton St., Suite 3000
Greenwood Village, CO 80111

learn more at www.JohnProppCommercial.com



CHASE TOWER

333 W. HAMPDEN AVENUE
ENGLEWOOD, CO 80110

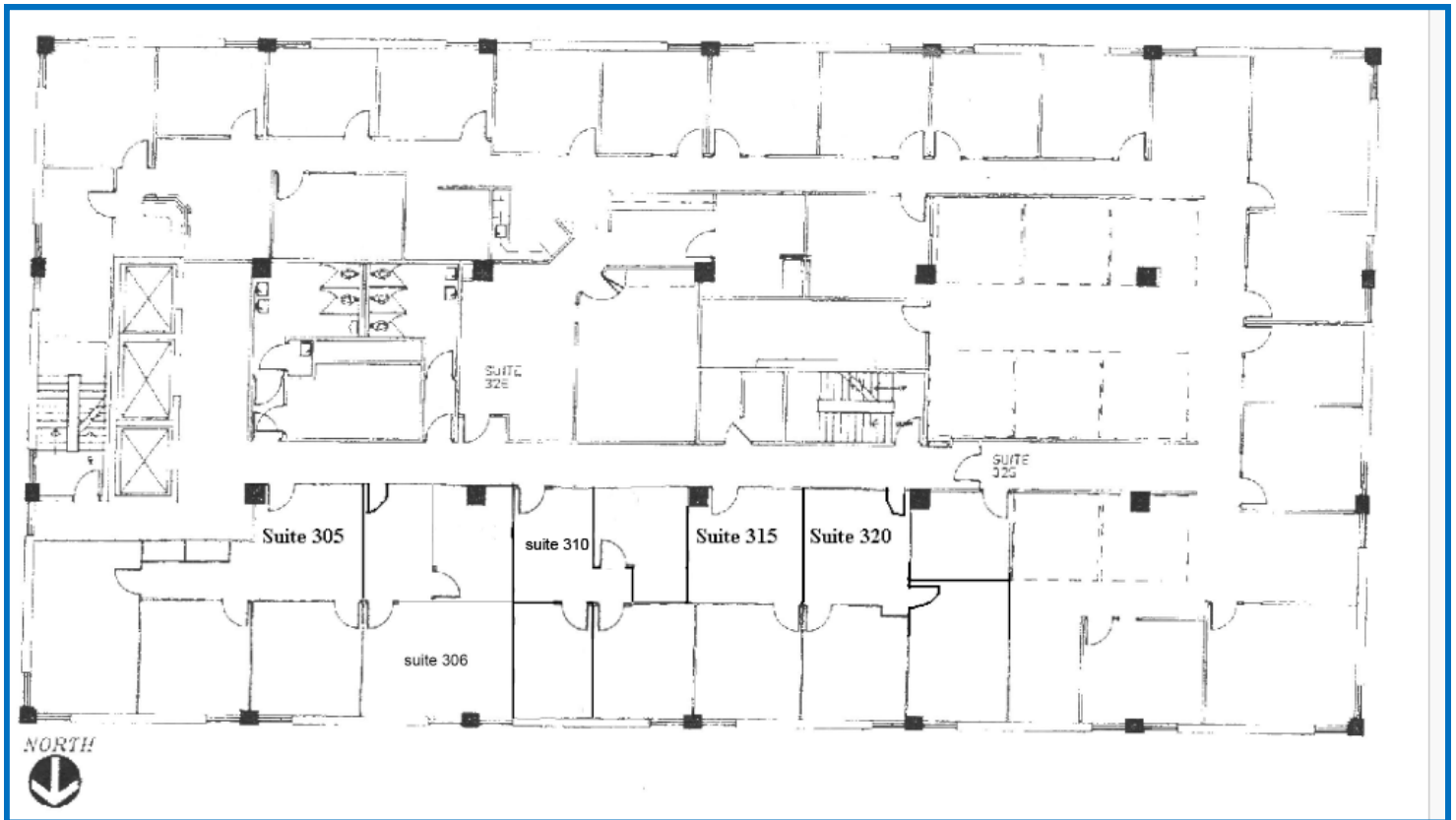


\$19.00—\$21.00 Full Service Rate

Full service lease rate—all expenses included

**Suite 350
640 SF**

Two offices, reception



No warranty or representation is made as to the accuracy of the foregoing information.
Terms of sale or lease and availability are subject to change or withdrawal without notice.

FOR MORE INFORMATION, PLEASE CALL:

**John V. Propp, CCIM—303/692-1816
6565 S. Dayton St., Suite 3000
Greenwood Village, CO 80111**

learn more at www.JohnProppCommercial.com



CHASE TOWER

333 W. HAMPDEN AVENUE
ENGLEWOOD, CO 80110

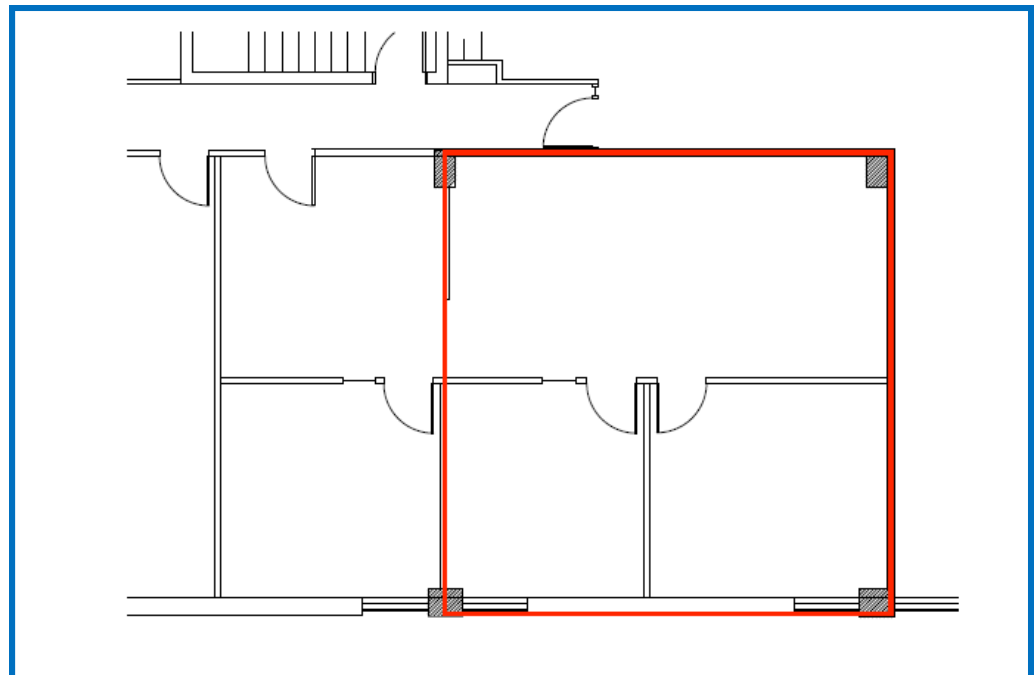


\$19.00—\$21.00 Full Service Rate

Full service lease rate—all expenses included

**Suite 435
837 SF**

Two offices and open space



No warranty or representation is made as to the accuracy of the foregoing information.
Terms of sale or lease and availability are subject to change or withdrawal without notice.

FOR MORE INFORMATION, PLEASE CALL:

**John V. Propp, CCIM—303/692-1816
6565 S. Dayton St., Suite 3000
Greenwood Village, CO 80111**

learn more at www.JohnProppCommercial.com



CHASE TOWER

333 W. HAMPDEN AVENUE
ENGLEWOOD, CO 80110

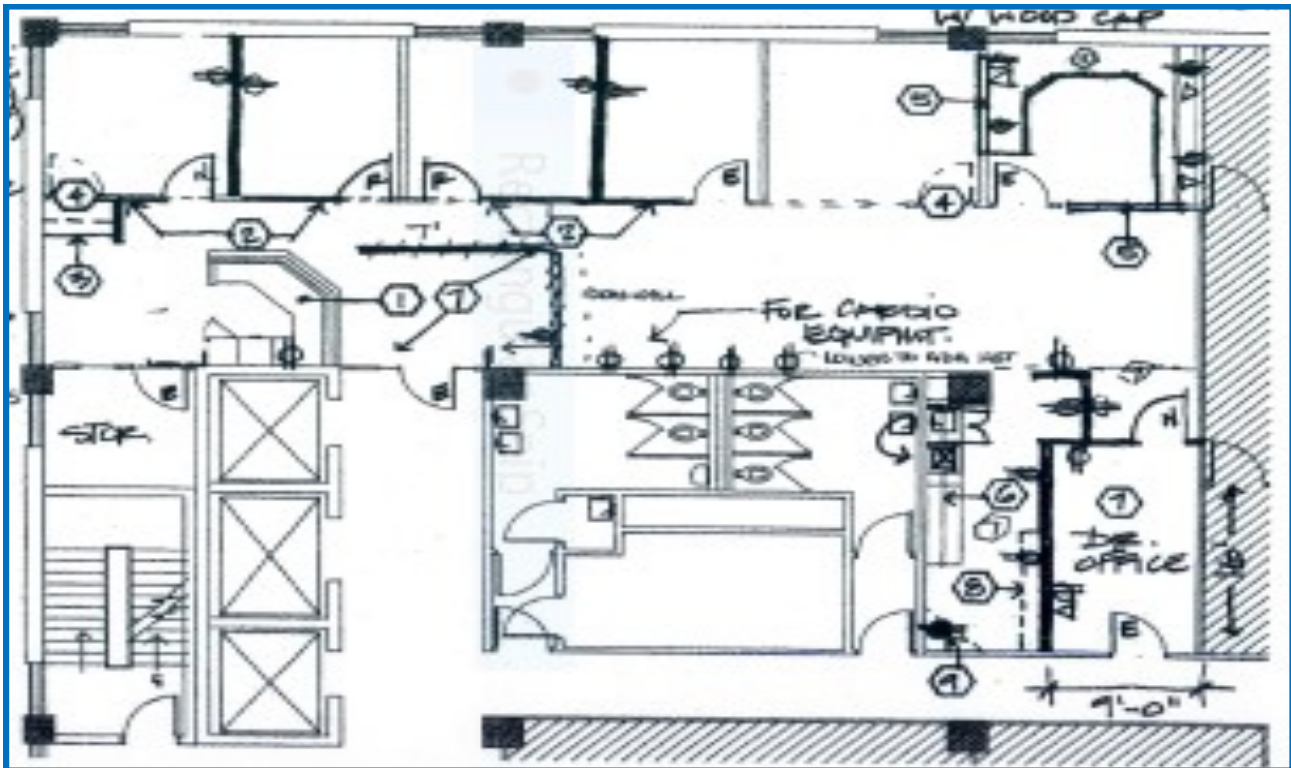


\$19.00—\$21.00 Full Service Rate

Full service lease rate—all expenses included

**Suite 500
2,344 SF**

Multiple offices, large open space, reception



No warranty or representation is made as to the accuracy of the foregoing information.
Terms of sale or lease and availability are subject to change or withdrawal without notice.

FOR MORE INFORMATION, PLEASE CALL:

**John V. Propp, CCIM—303/692-1816
6565 S. Dayton St., Suite 3000
Greenwood Village, CO 80111**

learn more at www.JohnProppCommercial.com



CHASE TOWER

333 W. HAMPDEN AVENUE
ENGLEWOOD, CO 80110

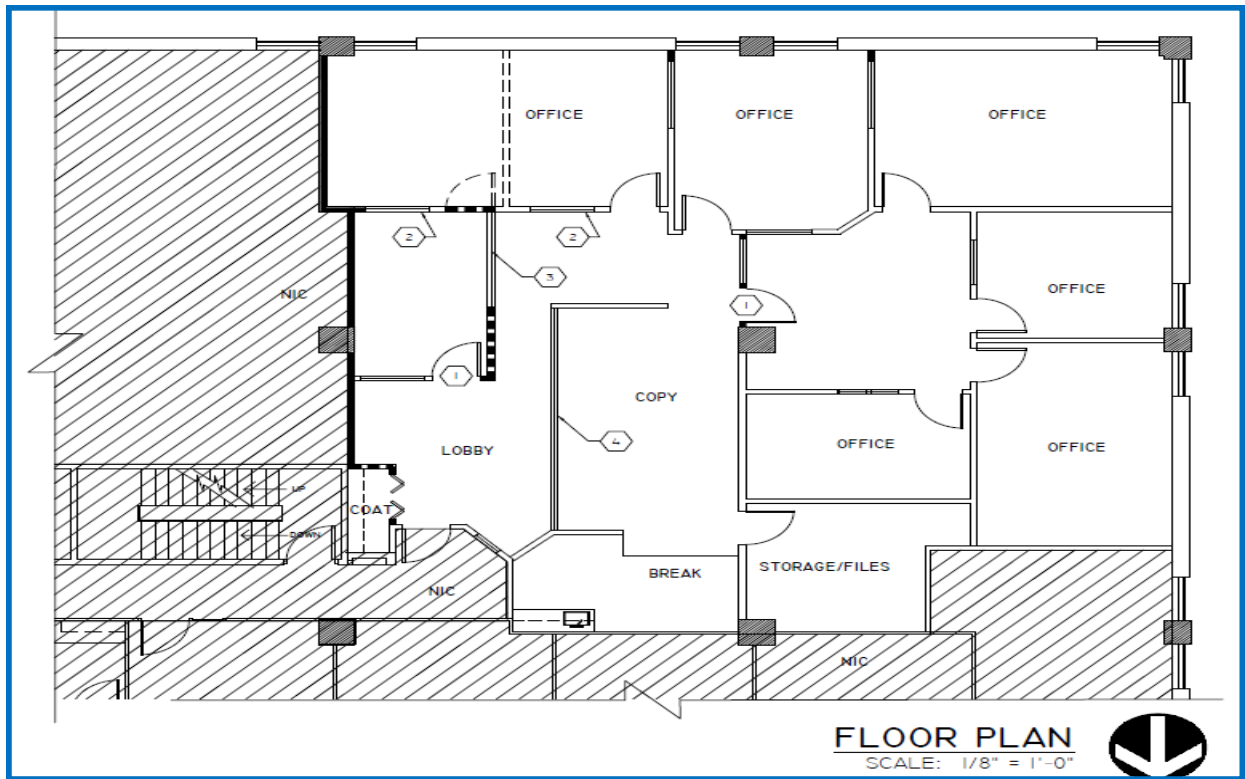


\$19.00—\$21.00 Full Service Rate

Full service lease rate—all expenses included

**Suite 545
2,817 SF**

**8 offices, kitchenette, bullpen,
conference room, storage**



No warranty or representation is made as to the accuracy of the foregoing information.
Terms of sale or lease and availability are subject to change or withdrawal without notice.

FOR MORE INFORMATION, PLEASE CALL:

**John V. Propp, CCIM—303/692-1816
6565 S. Dayton St., Suite 3000
Greenwood Village, CO 80111**

learn more at www.JohnProppCommercial.com



CHASE TOWER

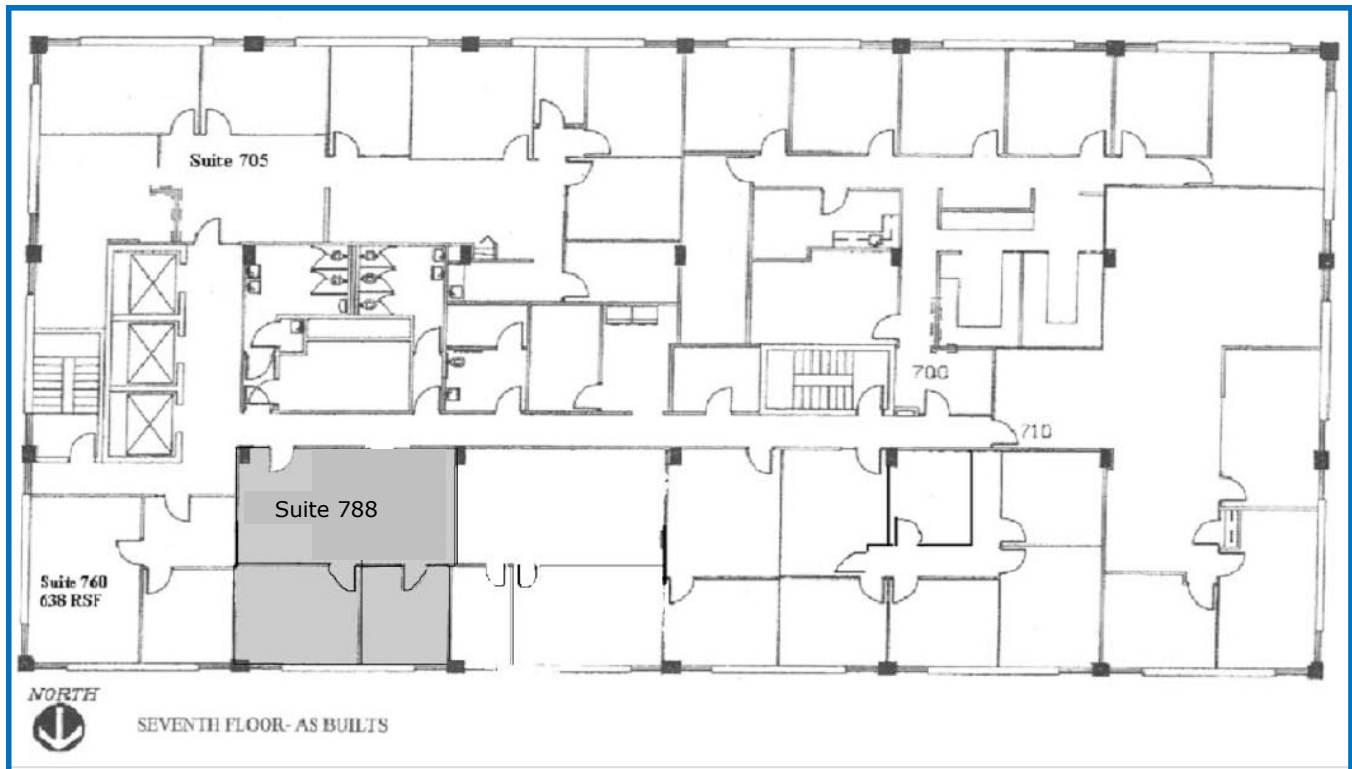
333 W. HAMPDEN AVENUE
ENGLEWOOD, CO 80110

\$19.00—\$21.00 Full Service Rate

Full service lease rate—all expenses included

**Suite 788
815 square feet**

Two offices, open space



No warranty or representation is made as to the accuracy of the foregoing information.
Terms of sale or lease and availability are subject to change or withdrawal without notice.

FOR MORE INFORMATION, PLEASE CALL:

**John V. Propp, CCIM—303/692-1816
6565 S. Dayton St., Suite 3000
Greenwood Village, CO 80111**

learn more at www.JohnProppCommercial.com



CHASE TOWER

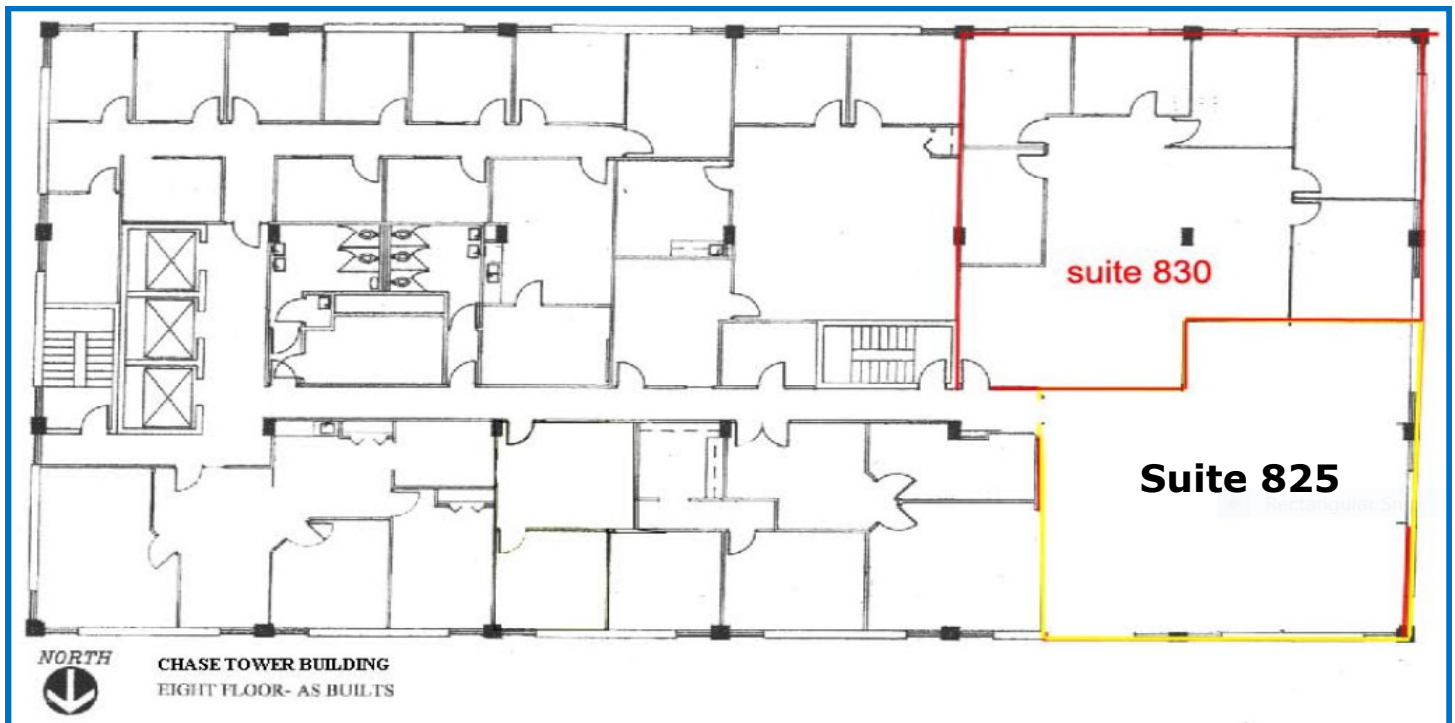
333 W. HAMPDEN AVENUE
ENGLEWOOD, CO 80110

\$19.00—\$21.00 Full Service Rate

Full service lease rate—all expenses included

Suite 825
651 square feet

Entry and one office



No warranty or representation is made as to the accuracy of the foregoing information.
Terms of sale or lease and availability are subject to change or withdrawal without notice.

FOR MORE INFORMATION, PLEASE CALL:

John V. Propp, CCIM—303/692-1816
6565 S. Dayton St., Suite 3000
Greenwood Village, CO 80111

learn more at www.JohnProppCommercial.com



CHASE TOWER

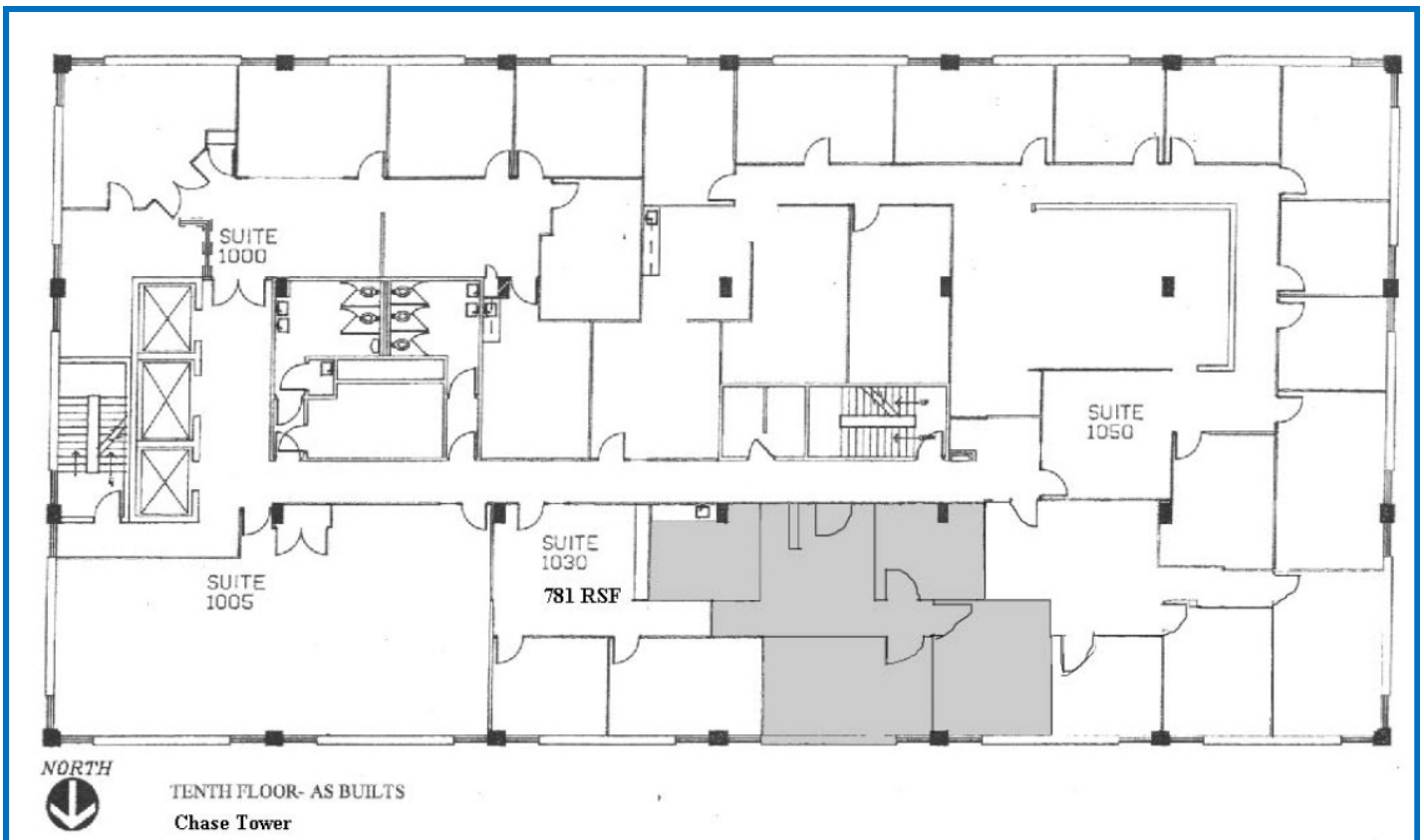
333 W. HAMPDEN AVENUE
ENGLEWOOD, CO 80110

\$19.00—\$21.00 Full Service Rate

Full service lease rate—all expenses included

**Suite 1040
1,161 square feet**

**Front reception, 3 offices, large
break room, storage closet**



No warranty or representation is made as to the accuracy of the foregoing information.
Terms of sale or lease and availability are subject to change or withdrawal without notice.

FOR MORE INFORMATION, PLEASE CALL:

**John V. Propp, CCIM—303/692-1816
6565 S. Dayton St., Suite 3000
Greenwood Village, CO 80111**

learn more at www.JohnProppCommercial.com

